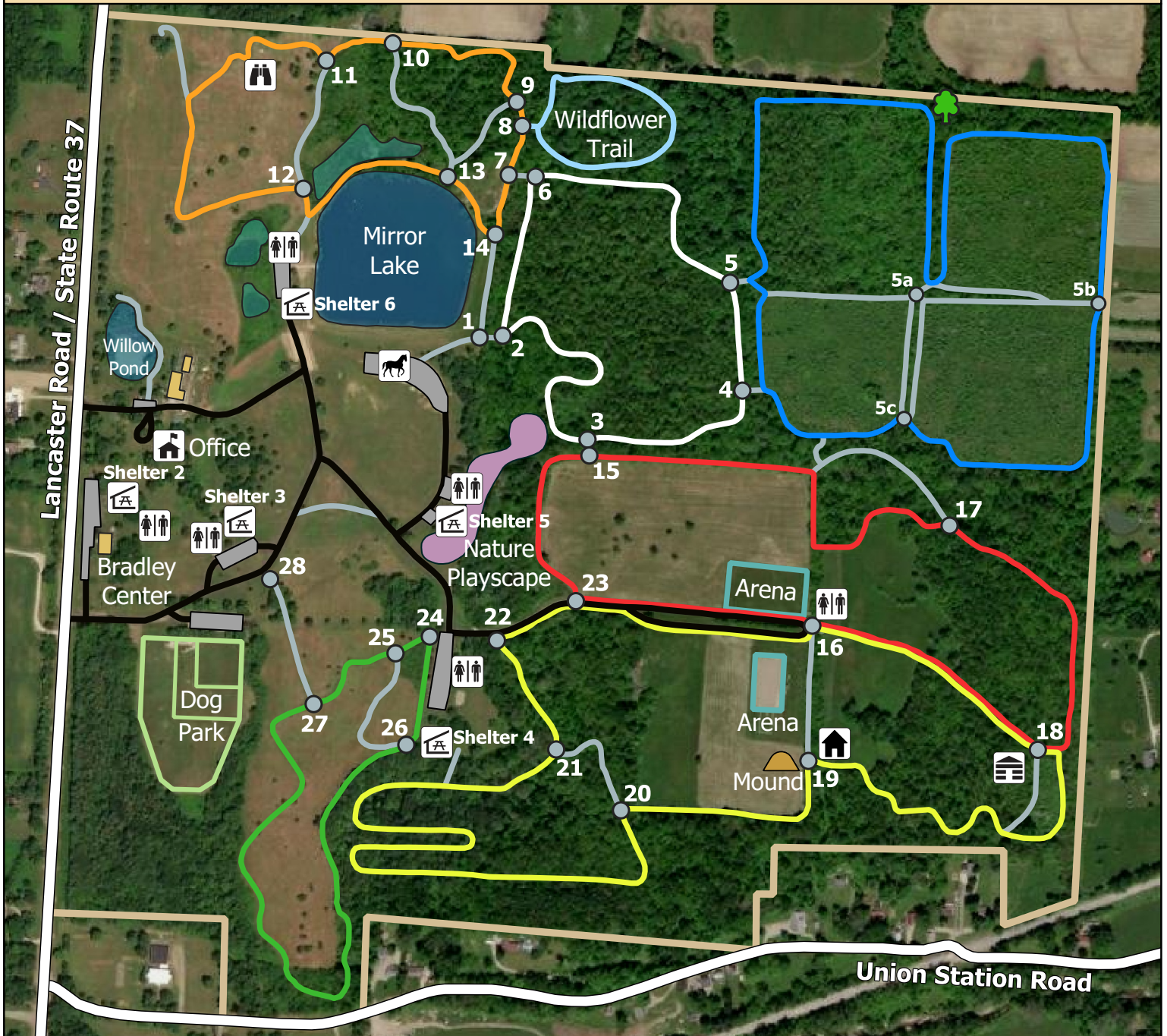




Infirmary Mound Park

4351 Lancaster Road, Granville OH
www.LickingParkDistrict.com (740) 587-2535

To check trail closures, call our trail hotline:
 (740) 349-4823



Legend

- | | | |
|-----------------------|------------------|--------------|
| Bur Oak | Barn | Parking |
| Infirmary Mound | Office | Park Drive |
| Cabin in the Woods | Restroom | Trail Marker |
| Horse Trailer Parking | Picnic Shelter | Lake |
| Scenic Overlook | Nature Playscape | Wetland |
| | Building | Dog Park |
| | | Arena |



- ### Trails (Length in Miles)
- | | |
|---------------|--------------------|
| Blue (1.45) | White (0.85) |
| Green (0.85) | Yellow (1.95) |
| Orange (0.95) | Wildflower (0.35) |
| Red (1.30) | Mirror Lake (0.40) |
| | Connector |