

There are 9 miles of trails located in this park, all available to hike, bike, and horseback ride.

To check trail closures, call our trail hotline:
(740) 349-4823

Legend

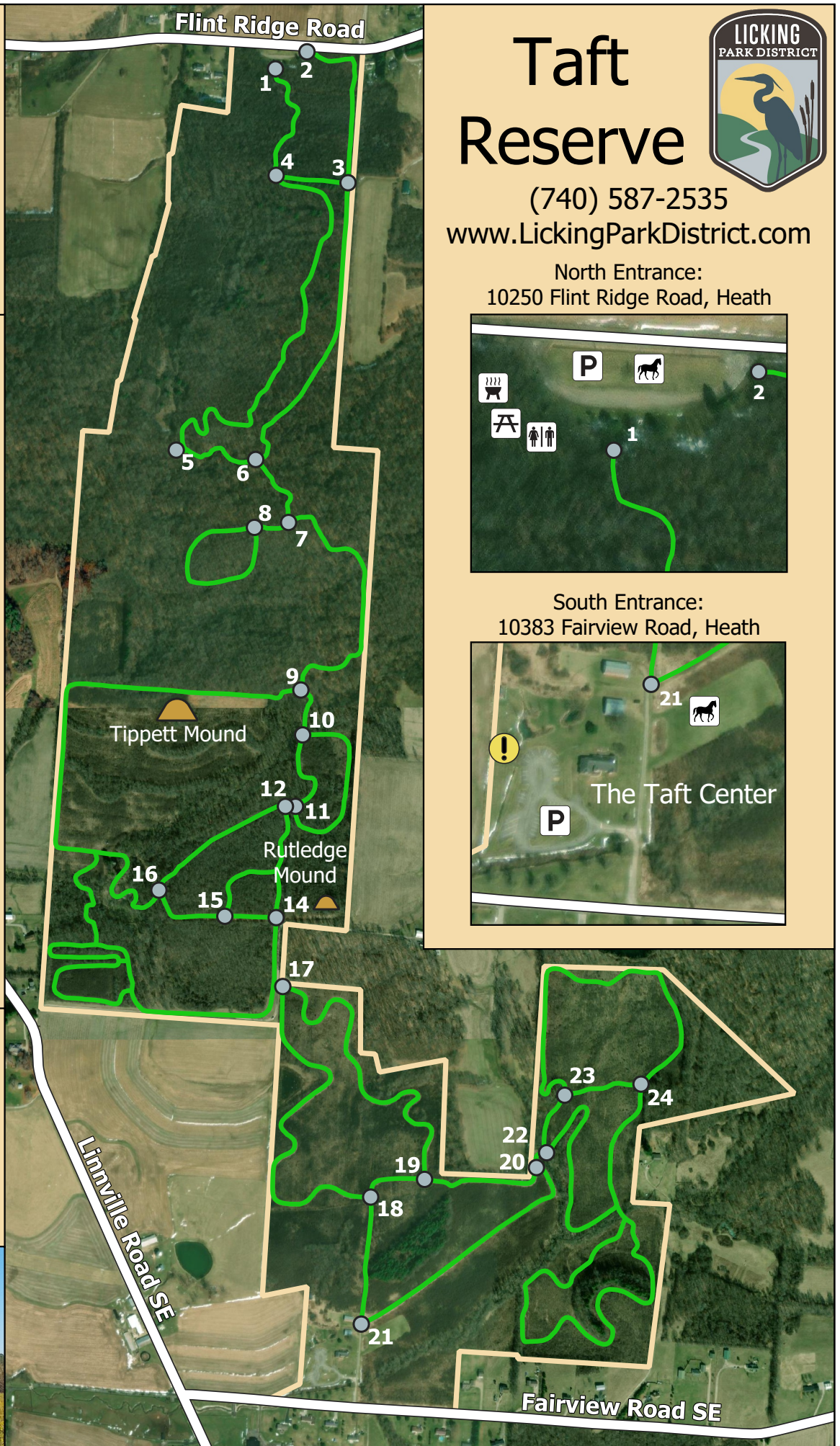
-  Picnic Area
-  Grill
-  Parking
-  Horse Trailer Parking
-  Restroom
-  Bee Hive Area
-  Burial Mound
-  Trail Marker
-  Trails



0 1/8th 1/4th mi

Did you know?

Rutledge Mound was built during the Hopewell culture era (200 BCE - 500 CE) and Tippet Mound (shown below) is even older, built during the Adena culture era (800 BCE - 100 CE).



Taft Reserve

(740) 587-2535
www.LickingParkDistrict.com

